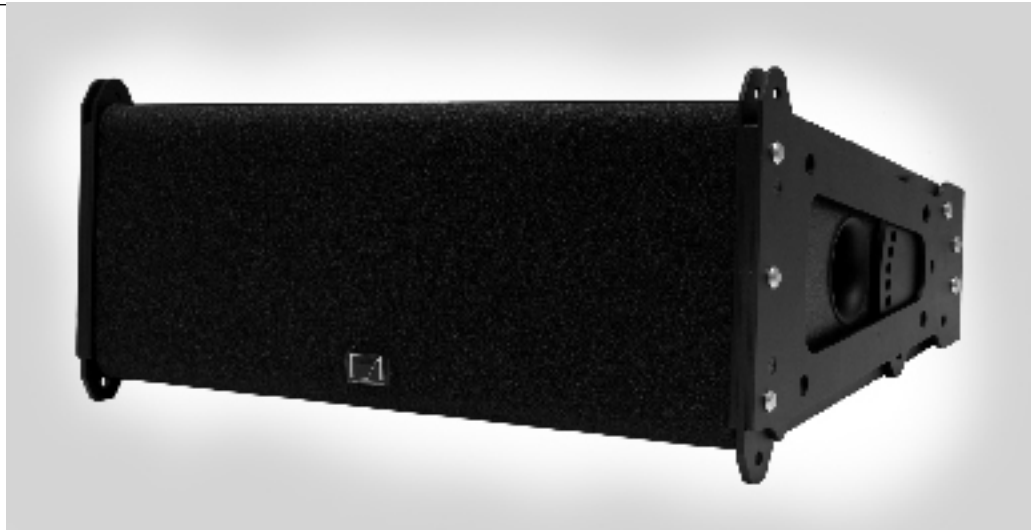


# die2.7

2-way active / passive system  
2 x 6,5" / 1" V.Curve Array



Die Kunst des Klangs

**Concept:** The die2.7 is a line array loudspeaker for use in vertical columns giving a 90° constant directivity dispersion pattern in the horizontal plane. The die2.7 cabinet is a passive or optional active 2-way design that houses 2 x 6,5" LF drivers and a 1" HF compression driver with a V.Curve wave shaping device to achieve the wherewithal dispersion characteristic. The two 6,5" LF drivers are positioned in a dipolar arrangement providing an exceptional dispersion control even at low frequencies, with the 85° nominal dispersion angle being maintained down to 500 Hz.

**Operation:** The die2.7 is ideal for situations using numerous open micro-phones, for speech and music. The system may be used indoor for up to 1500 and open-air for more than 3000 listeners to be provided with an exact and natural sound.



Housing from 15 - 27 mm premium birch plywood. Black textured finish. Powder-coated acoustical optimised square-stamped steel grill, foam covering, optional inside foam and outside hex-stamped stell grill with diffraction free edges.

#### System specifications:

Frequency Response (-5 dB)	73 Hz - 21 kHz
Sensitivity (SPL @ 1 m LF / HF / Passive)	97 (100 Hz) / 115 (3 kHz) / 97 dB (100 Hz)
Maximum Peak SPL (Free Field @ 1 m) 2-Way Active:	129 dB (min. +12 dB array of 6)
Maximum Peak SPL (Free Field @ 1 m) with P16 Passive:	128 dB (min. +12 dB array of 6)
	SPL peak, pink noise with crest-factor 4

#### Speaker specifications:

Nominal Impedance (LF / HF / Passive)	8 / 16 / 8 Ohms
Power Handling LF (RMS / prog. / peak 10 ms)	200 / 600 / 1200 W
Power Handling HF (RMS / prog. / peak 10 ms)	80 / 200 / 400 W
Power Handling Passive (RMS / prog. / peak 10 ms)	300 / 600 / 1200 W
Nominal dispersion -6 dB (hor.)	85°
	Splay angle settings 0° - 15° in 0,2° - 3,4° steps, logarithmic allocation

Components (LF transducers)	2 x 6,5" Conus
(HF transducers)	1" V.Curve - Horn
	Passive or 2-Way Activ with D1 F.I.R. - Controller
Connections (Passive) / (Active)	2 x NL4 (1+/-1- Ful, 2+/-2- Sense) / (1+/-1-LF, 2+/-2- HF)

#### Internal Class-D Ampmodul including controller

Total Amp Power	705 Watts RMS / 1400 Watts Music*
Connections	1 x XLR Female in, 1 x XLR Male out, 2 x Powercon ( in and out )
Weight, Dimensions	19,5 Kg (20,5 Kg internal powered), (H x W x D): 200 x 529 x 368 mm
Mounting / Working load	Vert. Flyingsystem / minim. 144 x Speaker-weight
Mounting Accessory:	Multiframe CTG-2.7

\* Class-D outputstage ch1 LF, ch2 HF each 61 V rms/87 V pk; 470 W longterm driven with 1 kHz sinewave signal at 1% THD on 8 Ohms  
IM < 0,05%, DIM < 0,005 %, CMRR > 80 dB (100 Hz) Typical > 90 dB. XLR female input and male output; Pin 1 ground, 2 +, 3 -;  
Impedance 20 kOhms Sym. (bet. Pin 2 and 3); 10 kOhms Unsym. (Pin 3 grounded).  
Powercon in&out, 180 - 265 VAC, 50 Hz, power consumption about 0,6 kW.



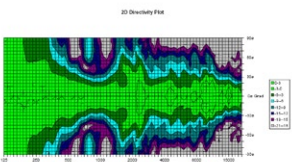
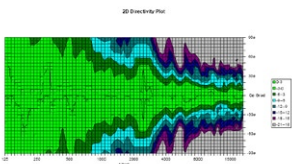
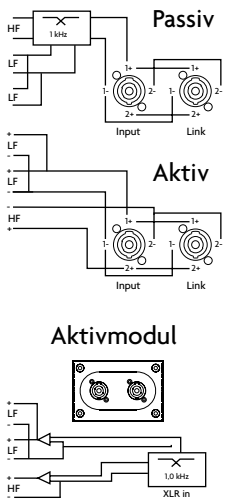
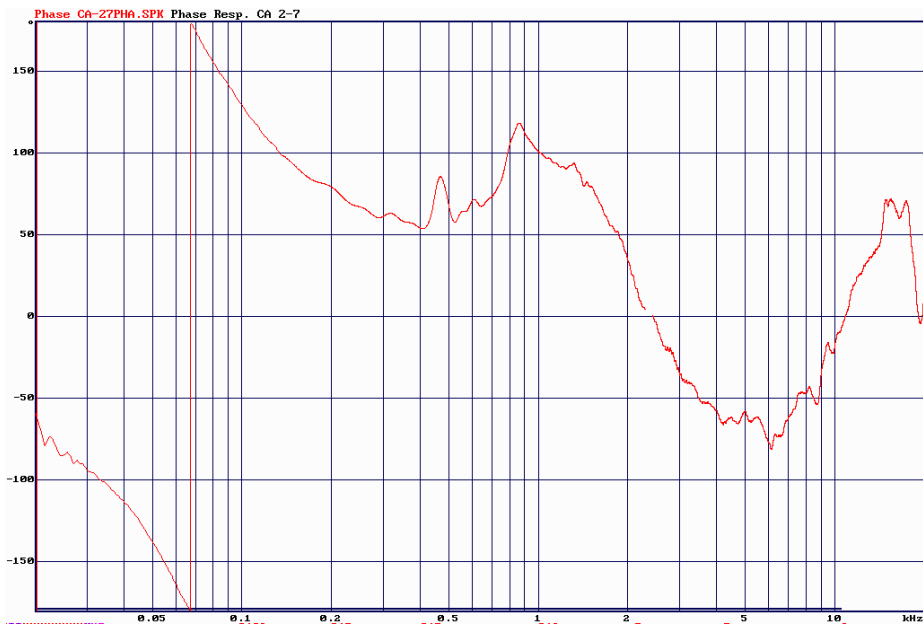
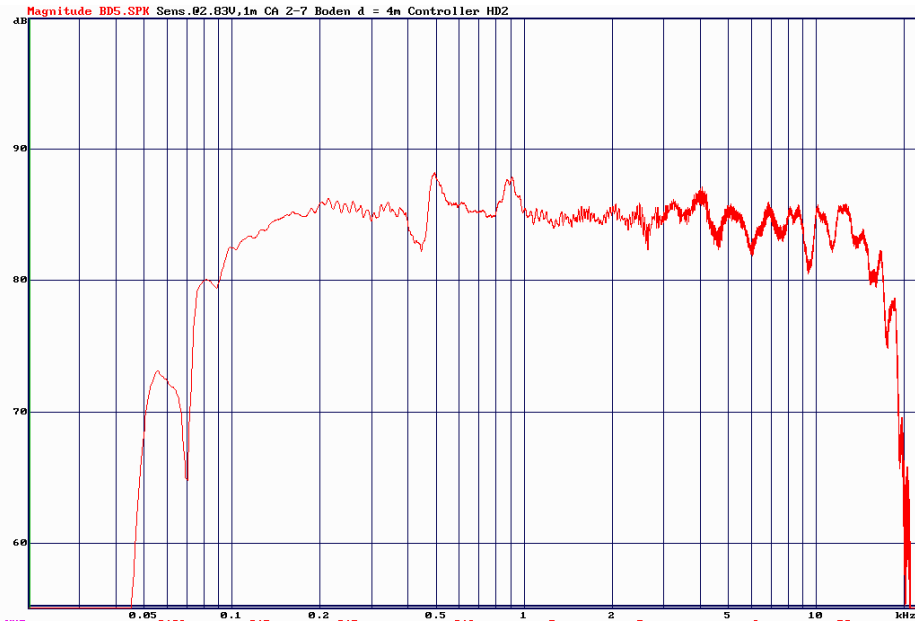
cadenbach acoustics

T +49 5472 979351  
www.cadenbach.eu

# die2.7

2-way active / passive system  
2 x 6,5" / 1" V.Curve Array

Die Kunst des Klangs

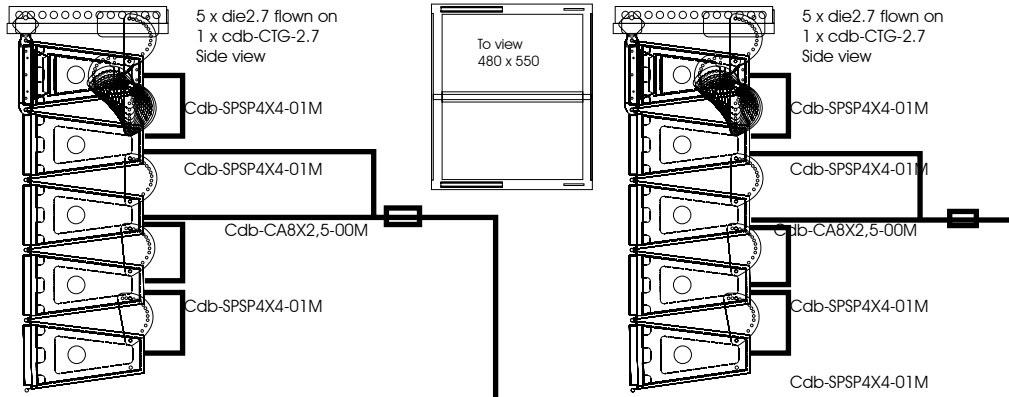


# die2.7

2-way active / passive system  
2 x 6,5" / 1" V.Curve Array

Chapel room 1 System 2 x 5x (L + R) + 1 x 3 x (Center) die2.7, 2 x 2 x ( Front ) + 1 x 2 x (Rear Cardioid) die1B

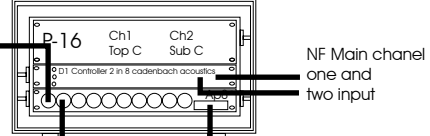
Position 6m each L/R from centerstage, 2,5m from first Row in 4,3m High, Curving Absolut aproximately: 11°, 14°, 18°, 25°, 33°



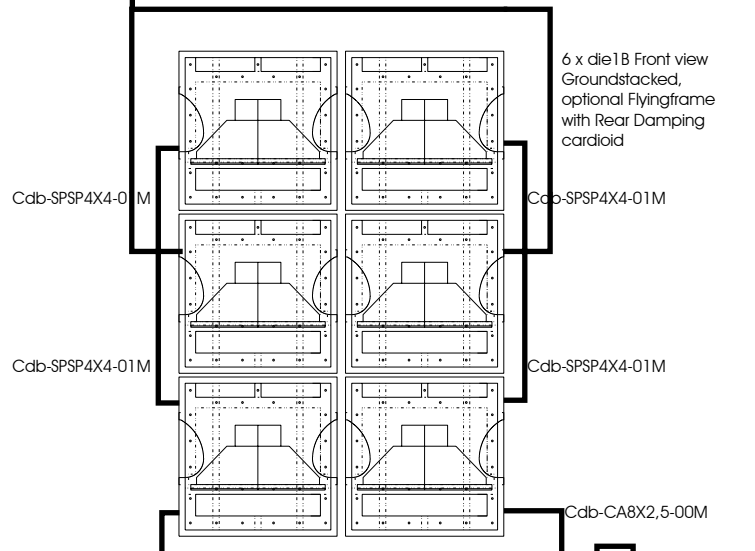
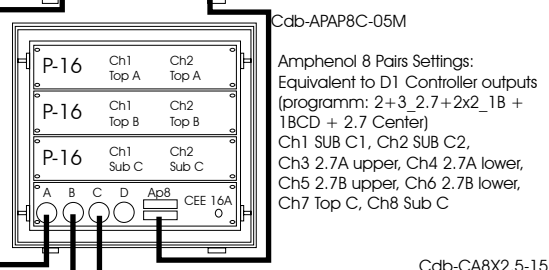
Position: centerstage, 0m from first Row in 4,3m High,  
Curving Absolut aproximately: 13°, 18°, 29° Cdb-CA8X2,5-15M



1 x cdb-SA4-4R with 1 x cdb-1D-42-00N digital  
2 in 8 FIR Controller with i/o Patchbay  
1 x cdb-8XLR-1AP XLR to Amphenol 8 Pairs  
1 x cdb-p-16-001: Ch1 Top Center,  
Ch2 Sub Cardioid Channel



3 x cbb-p-16-001, Amplifire 2 x 1600 RMS  
1 x cdb-P3CDCA-2PCAP, Patchbay  
Mounted in  
1 x cdb-SA8-4R, Systemcase 8U high  
configured for 2 x 5 x (L + R Mainsystems)  
die2.7 Top and 2 x 2 x Front die1B Subs



Die Kunst des Klangs



cadenbach acoustics

T +49 5472 979351  
www.cadenbach.eu